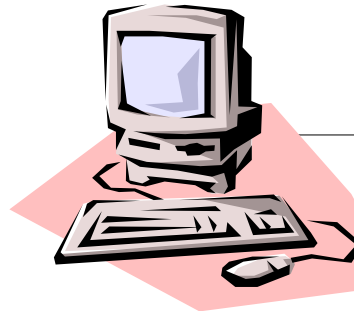


NOTES FROM THE UNDERGROUND

Volume 6, Number 4

October 17, 2006



Notes From the Underground is the newsletter of the GGU Law Library, distributed electronically to your email box.

LAW LIBRARY HOURS

Monday-Thursday
7:30 a.m. to 10:30 p.m.

Friday
7:30 a.m. to 9:00 p.m.

Saturday 10:00 a.m. to 7:00 p.m.

Sunday
10:00 a.m. to 10:30 p.m.

STUDY ANNEX HOURS

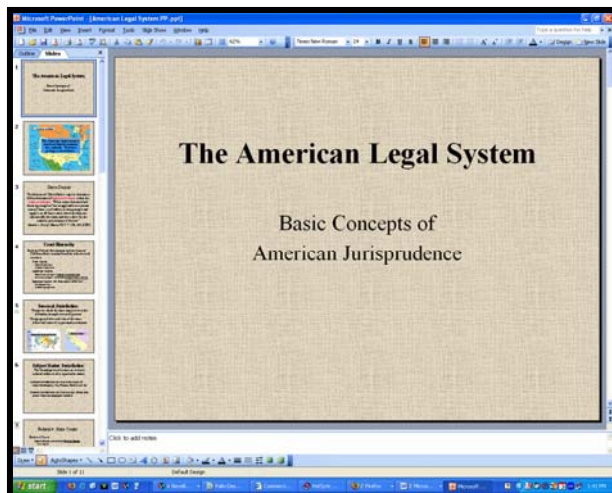
Monday-Friday
8:30 a.m. to 6:00 p.m.

Comments or questions about our newsletter?
Email Janet Fischer at jfischer@ggu.edu

STOP THE INSANITY— *the green way to print PowerPoint slides*

Many of you are diligently printing the PP slides that your professors post on TWEN or other course sites. Most of these printouts consist of multiple pages of bulleted talking points on dark backgrounds that make for easy viewing in class. Printing these, however, uses an incredible amount of toner and paper.

We offer the following solution. It is easy to change PowerPoint slides that look like this:



into an outline to print that looks like this (10 slides became a 3 page outline):



Method: While viewing a Power Point Presentation go to FILE > choose SEND TO > select MICROSOFT WORD > choose OUTLINE ONLY and click on OK.

LAW LIBRARY



www.ggu.edu/lawlibrary

HIGHLIGHTS OF NEW TITLES

New titles in the law library may always be found online at
<http://www.ggu.edu/lawlibrary/new/newacquisitions>.

Broken trust : greed, mismanagement & political manipulation at America's largest charitable trust / Samuel P. King & Randall W. Roth.
 Honolulu : University of Hawai'i Press, c2006.
KF228.K36 K56 2006.



"Princess Bernice Pauahi Bishop was the largest landowner and richest woman in the Hawaiian kingdom. Upon her death in 1884, she entrusted her property--known as Bishop Estate--to five trustees in order to create and maintain an institution that would benefit the children of Hawai'i: Kamehameha Schools. A century later, Bishop Estate controlled nearly one out of every nine acres in the state, a concentration of private land ownership rarely seen anywhere in the world. Then in August 1997 the unthinkable happened: Four revered *kupuna* (native Hawaiian elders) and a professor of trust-law publicly charged Bishop Estate trustees with gross incompetence and massive trust abuse. Entitled "Broken Trust," the statement provided devastating details of rigged appointments, violated trusts, [and the] cynical manipulation of the trust's beneficiaries."

How to build and manage a personal injury practice / by K. William Gibson.
 Chicago, Ill. : American Bar Association, 2006.
KF318 .G53 2006.

"Written by a personal injury lawyer who has been practicing for over 20 years, the book has been written for lawyers interested in starting a personal injury law practice, as well as for lawyers currently practicing P.I. who are interested in strengthening their practices. This book discusses the basic differences between personal injury law and other



Law Library Staff

Administration:

Michael Daw
 Co-Director, Head of Reference
 415-442-6682, mdaw@ggu.edu

Mohamed Nasralla
 Co-Director, Head of Circulation
 415-442-6684, mnasralla@ggu.edu

Caroline Cheng
 Administrative Coordinator
 415-442-6688, ccheng@ggu.edu

Public Services Staff:

Melissa Beuoy
 Evening Services Librarian
 415-442-6689, mbeuoy@ggu.edu

Marisa Diehl
 Electronic Services Librarian
 415-442-6683, mdiehl@ggu.edu

Janet Fischer
 Collection Development Librarian,
 Government Documents Librarian
 415-442-7826, jfischer@ggu.edu

Maryanne Gerber
 Head of Electronic Services
 415-442-6520, mgerber@ggu.edu

Technical Services Staff:

Hadi Amjadi
 Systems Librarian
 415-442-6686, hamjadi@ggu.edu

Ryun Lee
 Head of Technical Services
 415-442-6681, chlee@ggu.edu

Richard Bahto
 Technical Services Assistant
 415-442-3715 rbahto@ggu.edu

Sandy Farmer
 Cataloging Assistant
 415-442-7000 x3688
 sfarmer@ggu.edu

Gary Kemp
 Continuations/Government Documents Assistant
 415-442-3687, gkemp@ggu.edu

Sophia Korver
 Serials Assistant
 415-442-7000 x3696
 skorver@ggu.edu

Michelle Lam
 Acquisitions Assistant
 415-442-6687, mlam@ggu.edu

Computer Lab Technicians:

Rajans Popli

types of law practice and provides guidance for avoiding common pitfalls.

"The book also covers topics such as planning for a Personal Injury practice; deciding whether to go solo or form a partnership; marketing the Personal Injury practice; interviewing clients; keeping clients happy; managing the workload; office space and equipment; and financing the Personal Injury practice. "

The lawyer's guide to balancing life and work: taking the stress out of success / by George W. Kaufman.

Chicago : Law Practice Management Section, American Bar Association, c2006.
RA785 .K38 2006.

"Writing with warmth and seasoned wisdom, George Kaufman examines how the profession has changed over the last five year, then offers philosophical approaches, practical examples, and valuable exercises to help lawyers reconcile their goals and expectations with the realities and demands of the legal profession. You'll find information on empowering yourself to take charge of your environment and how to achieve your plan for personal growth. "

